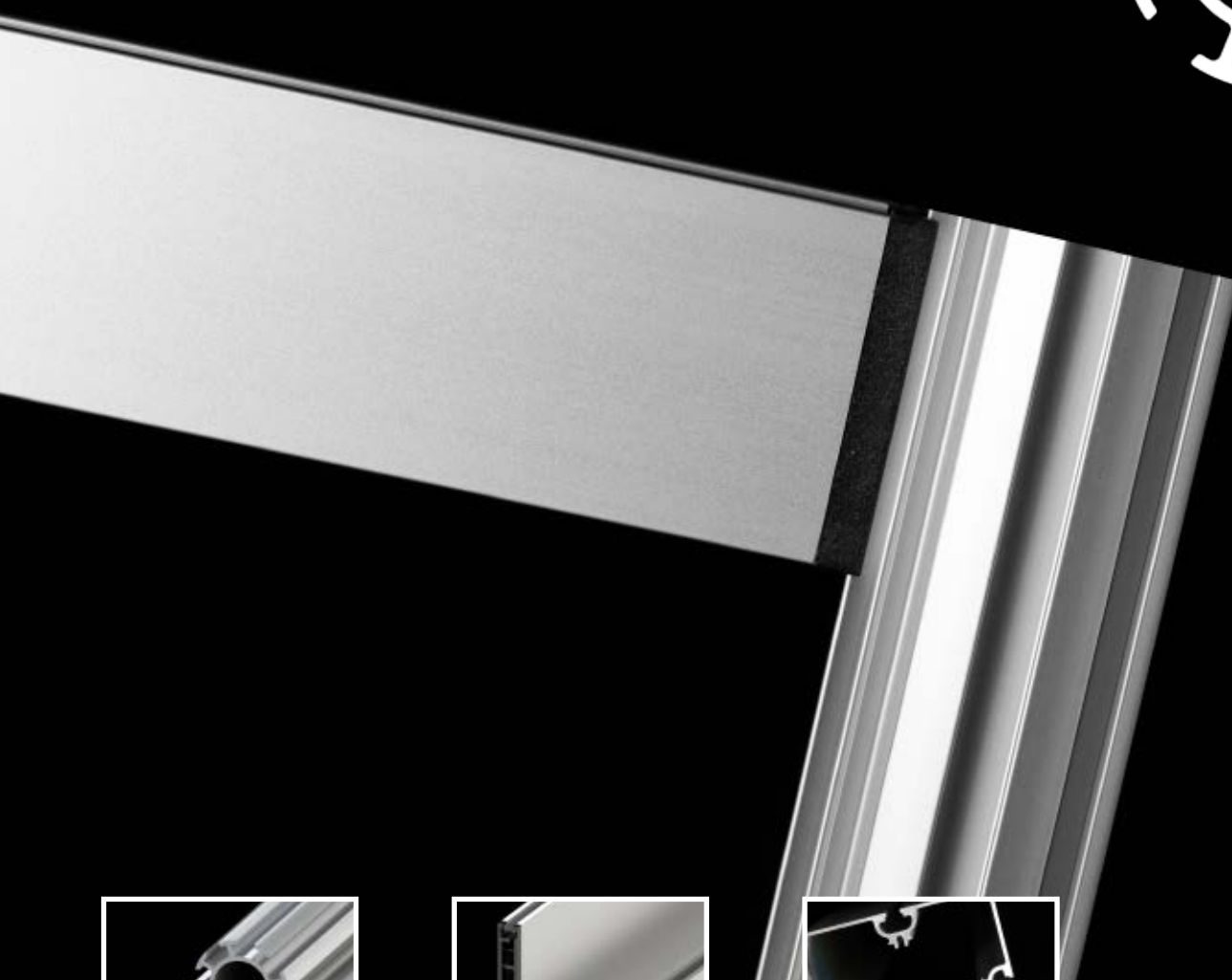


# Cobra Expo

## Modular exhibition system



Rund Uprights  
Ø44mm Uprights



Cross rails  
50mm or 150mm cross rails



MEGA  
Profiles with a strong presence

**SYSTEM**  
**STANDEX®**



# Direct method of supply

System Standex design, develop and manufacture all exhibition and display systems in house. We supply direct from our factory to our customers.

From our central production facility we manage the process from design to delivery – working closely with our customers to ensure a high quality cost effective product delivered on time

System Standex offer full production services including cutting – drillings – machining – bonding – powder coating – joinery and distribution.

We offer our profiles and jointing systems in a format to match your demands – as components or as a part or complete assembly.

System Standex have been involved in design and manufacture of aluminium frames for more than 50 years.

During this time we have developed systems for many industries and have established markets in

- exhibition and display
- shop fitting and visual merchandising
- museum displays including high security showcases
- machine guards – frames – partitions – enclosures

This brochure illustrates some of products we supply to the display industry. There is much more. Contact our experienced sales team to find out more.



# A flexible system

– can be linked and combined in many configurations

Examples of construction with Cobra Expo and MEGA .....	5
Cobra Expo.....	6-7
Modular sizes and uprights.....	8
Cross rails and decorative panels .....	9
Accessories, Cobra Expo .....	10-11
MEGA .....	12-13
Profiles and connections .....	14
Accessories, MEGA .....	15
Special fixing with Cobra Expo .....	16
Technical floor .....	17
Examples of stand constructions .....	18-19
Shell schemes and accessories.....	20
Displays with textile graphics.....	21
Modular lengths and panel sizes for Cobra Expo .....	22
Other brochures.....	23



Cobra Expo exhibition stand



Storage room and counter constructed in Cobra Expo



Cobra Expo exhibition stand



Showroom made from MEGA



Cobra Expo exhibition stand



Cobra Expo as shell scheme



Cobra Expo exhibition stand

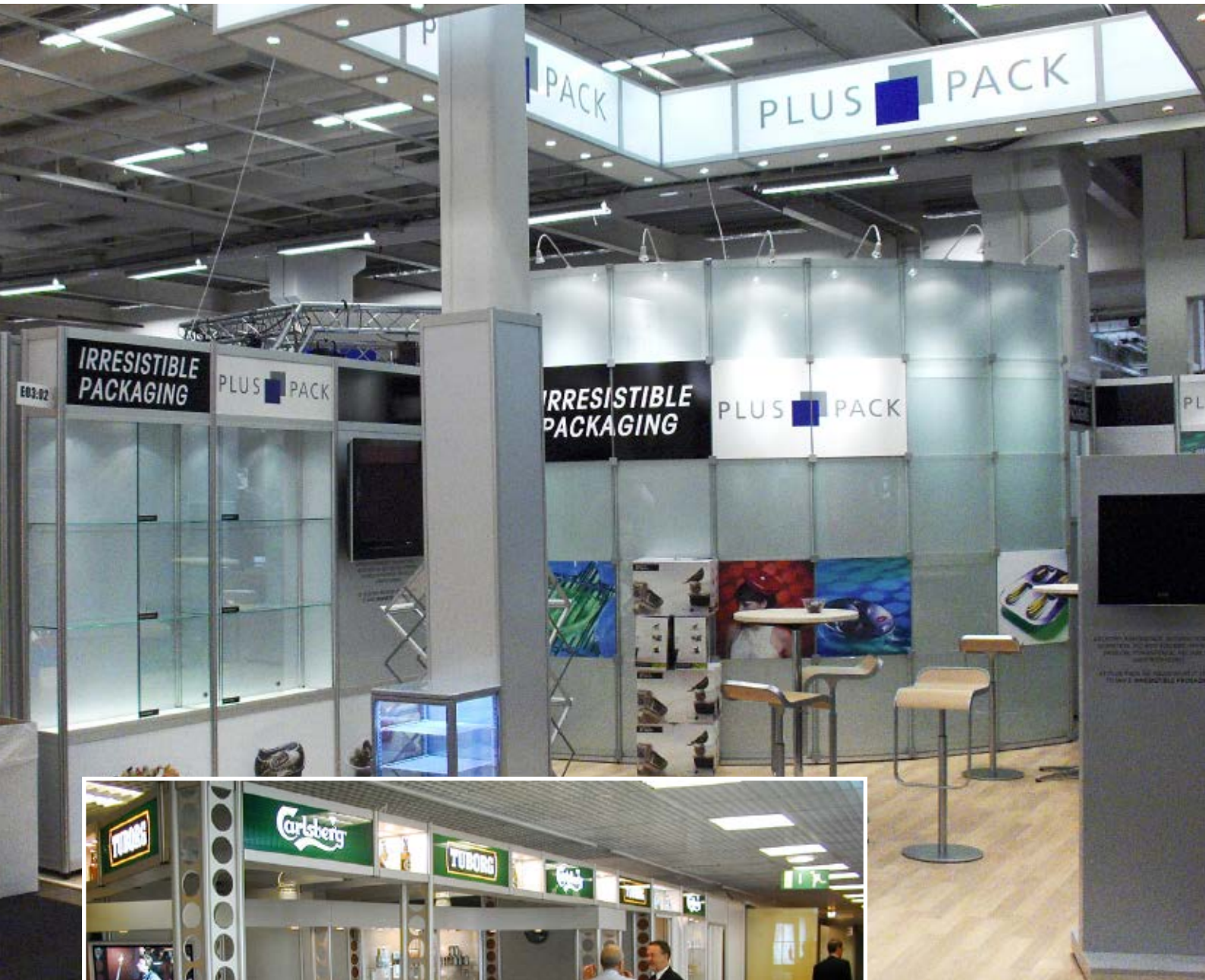


Cobra Expo exhibition stand



# Cobra Expo

Classic exhibition construction system with uprights and cross rails to take panels. Modular stand builds and shell scheme system.



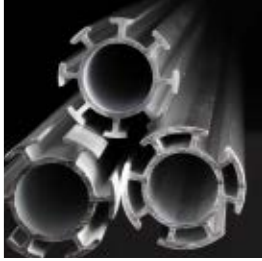
▲ Fittings for glass panels

◀ Decorative profiles

Constructed with uprights and cross rails and to take panels with and without graphics – Cobra Expo is a classic and robust construction system. The modular format makes design and build easy – plus a wide range of interchangeable accessories.

# Imaginative ideas

- easy to create



## Round uprights with 8, 6, or 4 channels

Uprights and cross rails are important basic components of Cobra Expo. Their circular shape produces an attractive design and numerous creative opportunities. Uprights are available in 8, 6 or 4 channel versions which allow you to design stands with a wide variety of angles that creates exciting and distinctive displays.



## Range of colours

Cobra Expo is available with a silver-anodised finish or in a range of colours to suit your design. System Standex offers an in house powder coating service using the RAL range of colours.



## Quality finish

Cobra Expo cross rails are fitted anywhere on the upright. The robust connectors on the cross rails expand when the Allen key is tightened. The cross rails are available in 50 or 150mm widths.



## Room for creativity

You can design and create exciting and eye catching displays with individual design. Curved walls, ceiling and sections – system creating your designs.

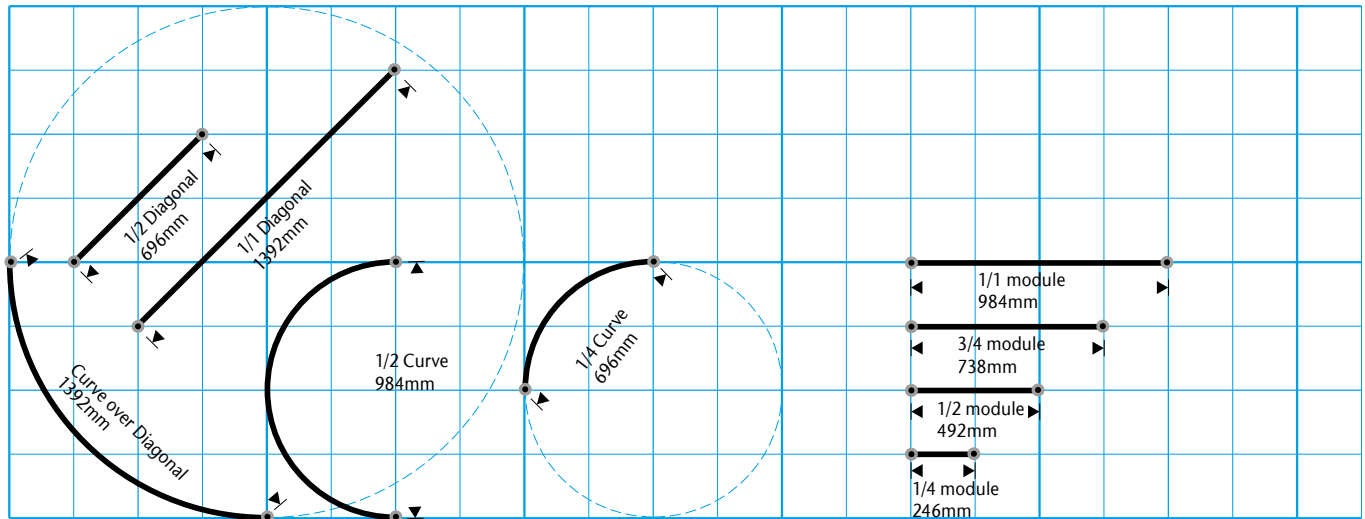
## Develop your stand

Cobra Expo takes practical details into account. Your exhibition stand can be constantly developed and revised using existing and addition system – and by combining it with other systems from System Standex.

# Cobra Expo

## Modular sizes

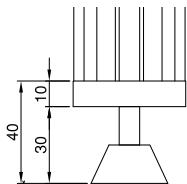
Dimensions are centre to centre of upright.



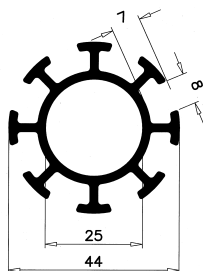
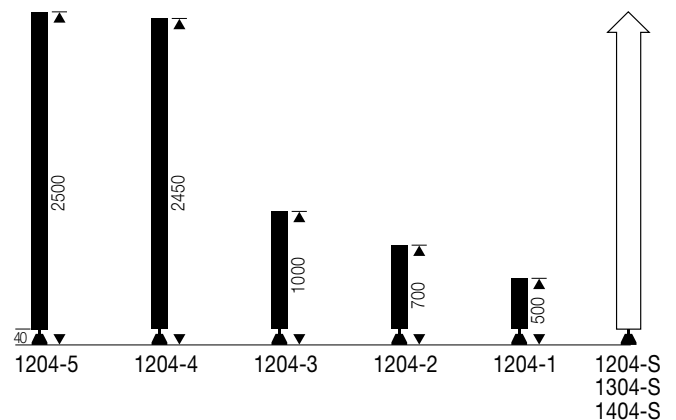
The module sizes are to modular lengths of 984mm between the centre of uprights. This ensures that there is room for complete modules in a stand which has been measured in full metres. Cross rail lengths are to the module sizes. Panels are cut in modular size -32mm to fit into the system. Read more about panel sizes on page 22. The system can be supplied in other modular sizes according to specification.

## Uprights

Uprights available with 8, 6 or 4 channels. Uprights are supplied with an adjustable foot. The uprights can also be produced in specific lengths.

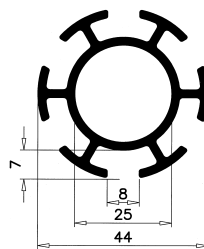


**Complete 8 channel upright with foot**  
Lengths in mm



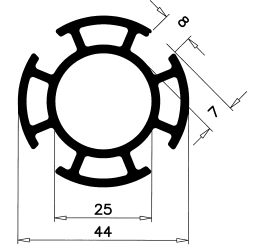
**8 channel upright**  
with adjustable foot

- 1204-1 500mm
- 1204-2 700mm
- 1204-3 1000mm
- 1204-4 2450mm
- 1204-5 2500mm
- 1204-S In specific lengths.



**6 channel upright**  
with adjustable foot

- 1304-S In specific lengths.



**4 channel upright**  
with adjustable foot

- 1404-S In specific lengths

If you want to cut and mounting uprights and cross rails : See page 9.



# Cobra Expo

## Cross rails

Cross rails are available in widths of 50 or 150mm. They are supplied pre-fitted with joints and connectors in standard module size starting with ¼ module and up to full diagonal.



### 50mm cross rail

Pre-fitted with joints and connectors

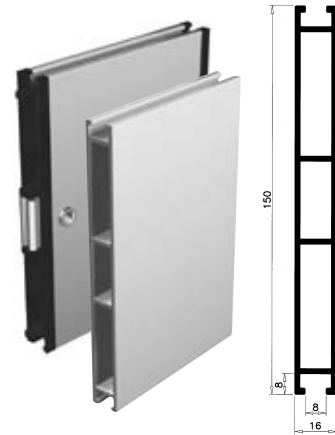
- 1201-1 1/4 module
- 1201-2 1/2 module
- 1201-3 3/4 module
- 1201-4 1 module
- 1201-7 2 modules
- 1201-8 3 modules
- 1201-9 4 modules
- 1201-10 5 modules
- 1201-6 1/2 modul diagonal
- 1201-5 1 modul diagonal
- 1201-S In specific sizes



### Curved 50mm cross rail

Pre-fitted with joints and connectors

- 1202-1 1/4 curve
- 1202-2 1/2 curve
- 1202-3 Diagonal curve
- 1202-S Curves in specific designs

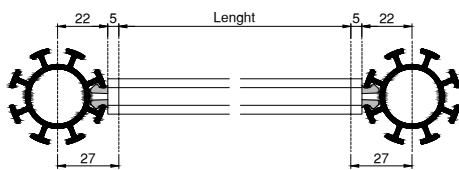


### 150mm cross rail

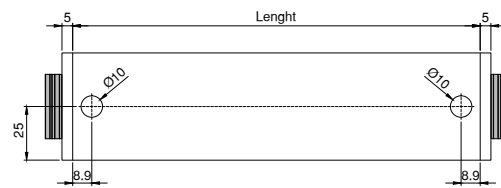
Pre-fitted with joints and connectors

- 1200-1 1/4 module
- 1200-2 1/2 module
- 1200-3 3/4 module
- 1200-4 1 module
- 1200-7 2 modules
- 1200-8 3 modules
- 1200-9 4 modules
- 1200-10 5 modules
- 1200-6 1/2 module diagonal
- 1200-5 1 module diagonal
- 1200-S In specific sizes

### Technical info



Cutting length of special lengths is 54 mm shorter than the distance between the module lines (27 mm on each side).

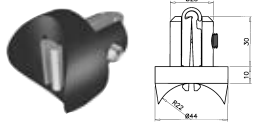


The connector holes are drilled exactly as shown.

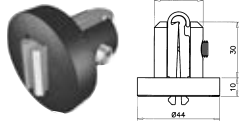
# Cobra Expo

## Accessories

A comprehensive range of accessories that offer additional options to the system to produce the complete exhibition stand.



**1105-20**  
Joint for assembly of  
uprights/uprights, black



**1105-21**  
Joint for assembly of  
upright/cross rail, black



**1108-9**  
Suspension fitting for  
50mm cross rail.



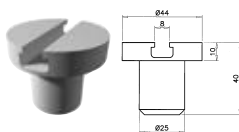
**1108-10**  
Suspension fitting for  
150mm cross rail.



**1108-1**  
Upright extension,  
allow extra height. Also  
a practical solution for  
transport.



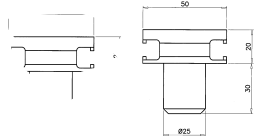
Cross rails can be fitted  
horizontally on top of  
uprights.



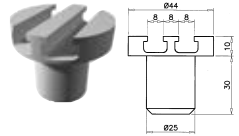
**1105-22**  
Joint for fitting curves  
to uprights, single.



Curved cross rails can  
be fitted on top of uprights.



**1106-11**  
Joint for e.g. ceiling  
construction.



**1105-23**  
Joint for fitting curves  
to uprights, double.



**1231**  
Suspension  
fitting.



**1231-1**  
Fitting with eye  
bolt.



**1105-30**  
Support for  
wooden shelves  
Grey nylon



**1105-30G**  
Support for  
glass shelves.  
Grey nylon



**1231-2-6x8**  
Eye bolt for  
insert nut  
GDS-711-M6



**GDS-711-M5**  
Insert nut M5



**GDS-711-M6**  
Insert nut M6



**GDS-711-M8**  
Insert nut M8



**1211**  
Shelf support.



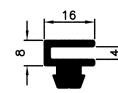
**1210**  
Shelf, metal, White.



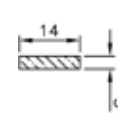
**1213**  
Shelf support.



**1212**  
Magazine shelf, metal,  
White.



**1105-16**  
Profile for fit-  
ting of fabric  
graphics.



**1105-17**  
PVC profile  
for fabric  
graphics.



**1216**  
Small coat  
hook fitting.



**1214**  
Suspension track for panels.



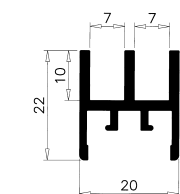
**1215**  
1 module coat hook fitting.



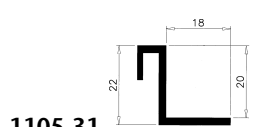
**1218**  
Suspension  
fitting for graphic panels



**1214-1 (right) / 1214-2 (left)**  
Corner suspension track for panels.



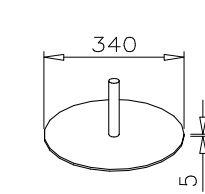
**1105-13**  
Sliding door section in  
5m length.



**1105-31**  
Shelf support for rails.



**1105-9**  
Fibre section.



**WSF-44**  
Base plate with pin.  
Ø340mm



**1225**  
Curtain.



**1226-H / 1226-V**  
Side-hinged door.

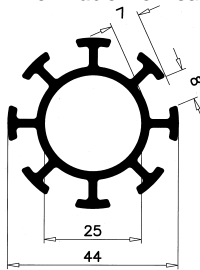
## Components required for the construction of an exhibition stand system

Design and create your own exhibition stand using Cobra Expo.  
Profiles can be supplied in full lengths and fittings as required.  
Please ask for further information on cutting, machining and assembly.

### Uprights

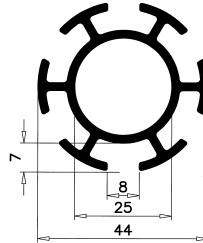
**8 channel uprights**  
profile only

- 1203-7 50mm
- 1203-1 150mm
- 1203-8 300mm
- 1203-2 460mm
- 1203-3 660mm
- 1203-4 960mm
- 1203-5 2410mm
- 1203-6 2460mm
- 1203-S In specific lengths
- RC44-8 Full lengths of 5 m



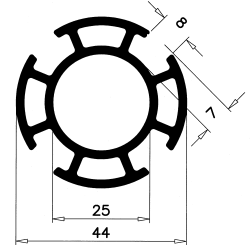
**6 channel uprights**  
profile only

- RC44-6 Full lengths of 5 m
- 1303-S In specific lengths.

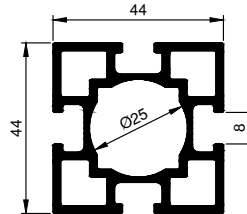


**4 channel uprights**  
profile only

- RC44-4 Full lengths of 5 m
- 1403-S In specific lengths.

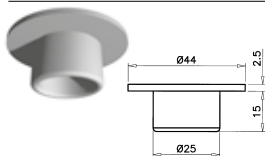


**Square uprights**  
profile only

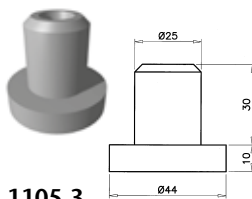


### Upright accessories

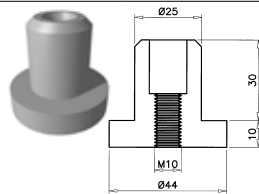
RC44-44-4 Full lengths of 5 m



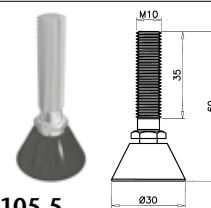
- 1105-1 Top plug for upright, black
- 1105-2 Top plug for upright, grey



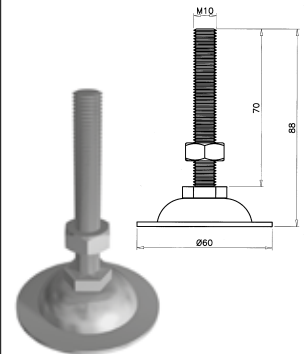
- 1105-3 Bottom plug for upright, black



- 1105-4 Threaded bottom plug for upright, black



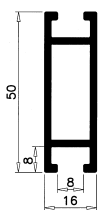
- 1105-5 Adjustable foot for bottom plug 1105-4, black



- 1105-6 Adjustable foot in steel for bottom plug 1105-4

### Cross rails

### Accessories for cross rails

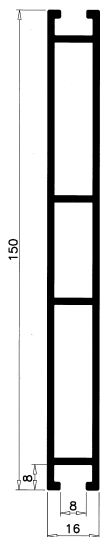


▲ **50mm**  
unfitted

RC44-5 Full lengths of 5 m.

▲ **150mm**  
unfitted

RC44-15 Full lengths of 5 m.



**Connections for 50mm cross rails.**

- 1106-5 Round for cross rail/upright, black nylon
- 1106-6 Round for cross rail/upright, grey nylon
- 1106-7 Flat for cross rail/cross rail, black nylon
- 1106-8 Flat for cross rail/cross rail, grey nylon

- 1108-6 Connector for 45° joint for 50mm cross rails, black nylon, rounded for cross rail/upright



- 1108-8 Connector for 30° joint for 50mm cross rails, black nylon, rounded for cross rail/upright

**Connections for 150mm cross rails.**

- 1106-1 Round for cross rail/upright, black nylon
- 1106-2 Round for cross rail/upright, grey nylon
- 1106-3 Flat for cross rail/cross rail, black nylon
- 1106-4 Flat for cross rail/cross rail, grey nylon



**End plugs for 50mm cross rail.**

- 1105-7 Black nylon
- 1105-8 Grey nylon

**SKRUE-PC-M10x9**  
Screw for joint

**PC44-5**  
Joint for 50 and 150mm cross rail

**1108-5-H / 1108-5-V**  
45° Joint for 50mm cross rail

**1108-7-H / 1108-7-V**  
30° Joint for 50mm cross rail

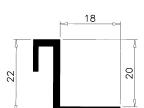
**1105-15**  
Length wise joint for 50mm cross rail

**1105-40**  
Allen key for joint

**1105-41**  
Spec. Allen key for corner joints

**1105-42**  
Ratchet with Allen key for joints

**1105-12**  
Aluminium shelf support section, in 5 m length



# MEGA PROFILE

Profiles with a strong visual presence. Designed to take panels and banners.  
Modular stands or combined with other systems to add presence.



120x120 mm profile



Ø120 mm profile



80x80 mm profile

MEGA profiles provide a strong presence and they can be combined and linked with other systems from System Standex.



# MEGA PROFILE

SYSTEM  
STANDEX®

When the visual impact of the frame is all important

MEGA can be combined and linked with other systems from System Standex providing complete flexibility.



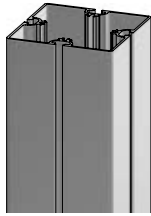
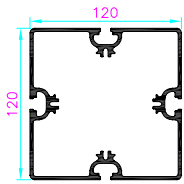
▲ The robust Mega profiles lend themselves to challenging designs and construction ideas.

◀ Impressive ceiling construction using MEGA.

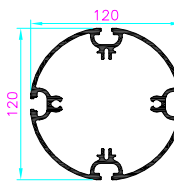
# MEGA PROFILE

## Profiles

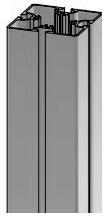
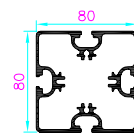
RC120-4



RC120-4R

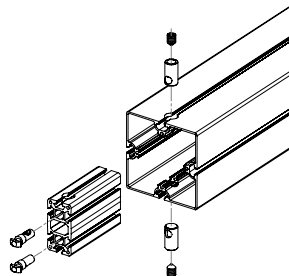
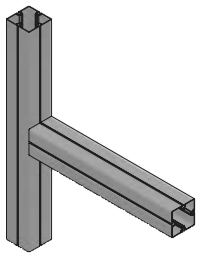


RC80-4

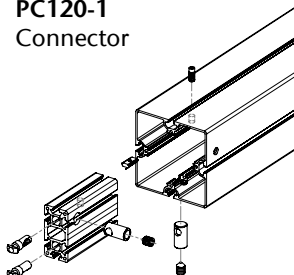
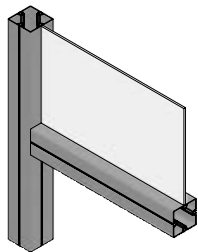


## Connectors

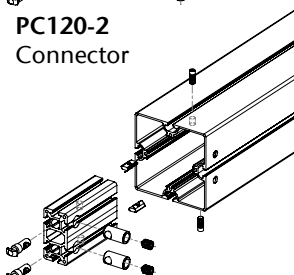
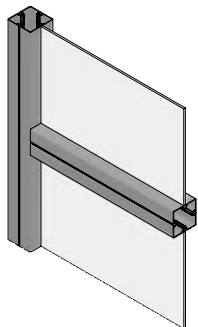
For RC120-4:



PC120-1  
Connector

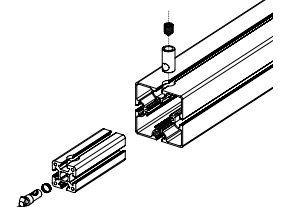
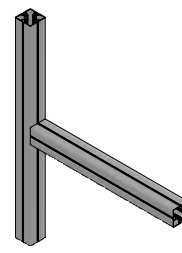


PC120-2  
Connector

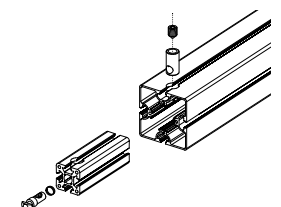
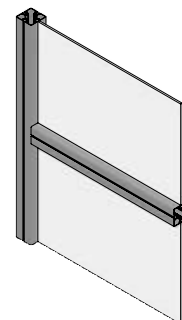


PC120-3  
Connector

For RC80-4:



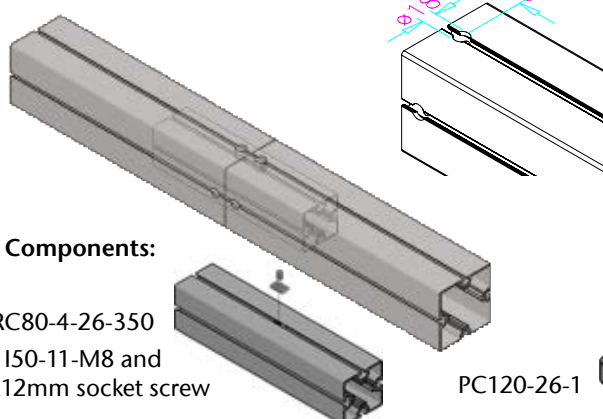
PC80-1  
Connector



PC80-2  
Connector

## Straight connectors

For RC120-4:

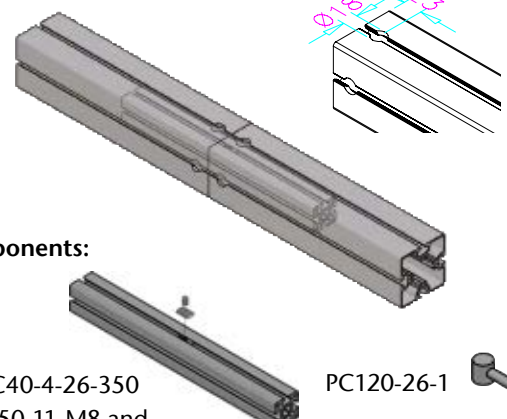


Components:

1 x RC80-4-26-350  
incl. ISO-11-M8 and  
M8x12mm socket screw

PC120-26-1

For RC80-4:



Components:

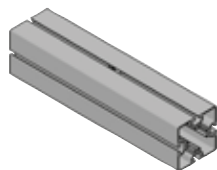
1 x RC40-4-26-350  
incl. ISO-11-M8 and  
M8x8mm socket screw.

PC120-26-1

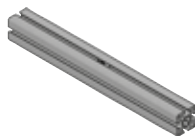
# MEGA PROFILE

**SYSTEM  
STANDEX®**

## Connectors in variable lengths



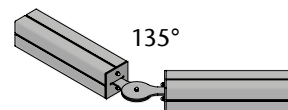
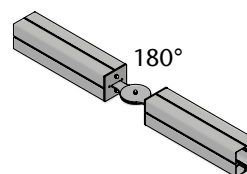
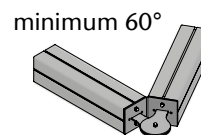
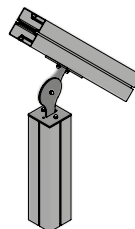
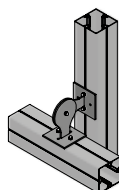
**RC80-4-26-S**  
for RC120-4.  
Variable length



**RC40-4-26-S**  
for RC80-4,  
Variable length

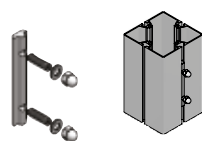
## Examples of use

Flexible connector for RC120-4

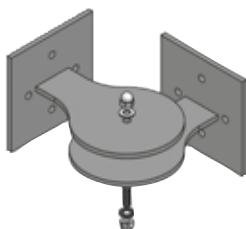


## Flexible connections

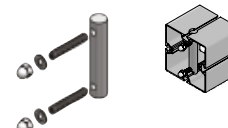
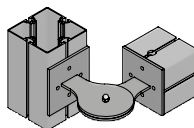
For RC120-4:



PC120-25-2



PC120-25-S



PC120-25-1

## Accessories

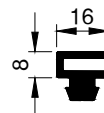
**WS-120-10**  
Banner holder  
for Ø12mm profile.



**RC12-1**  
Aluminium profile,  
Ø12mm



**1105-16**  
Profile for fabric.



**D10-M10**  
Levelling foot M10.



**I50-11-31-1**  
Fitting with open M5  
eye bolt.



**I50-11-31-2**  
Fitting with closed  
M5 eye bolt.



For RC120-4:

**D120-4-6G/M10**  
Base plate with  
threaded hole M10.



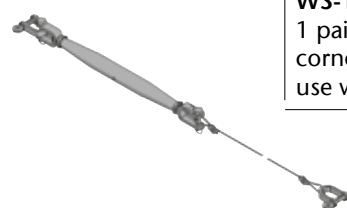
For RC120-4R:

**D120-4R-6G/M10**  
Base plate with  
threaded hole M10.



For RC80-4:

**D80-4-6G/M10**  
Base plate with  
threaded hole M10.



**WS-120-2**  
Complete wire with turn-  
buckle, specify length.

**WS-120-1**  
1 pair of  
corner plates for  
use with WS-120-2.



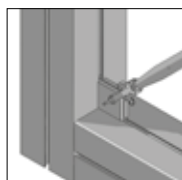
**D120-6**  
End cap.



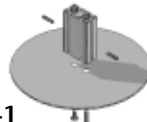
**D120-6R**  
End cap.



**D80-6**  
End cap.



**WSF-120-1**  
Base plate Ø340 mm  
for RC120-4.



**WSF-120-1R**  
Base plate Ø340 mm  
for RC120-4R.



**WSF-80-1**  
Base plate Ø340 mm  
for RC80-4.



**I50-4x5-200**  
Joining system to extend Mega profiles.



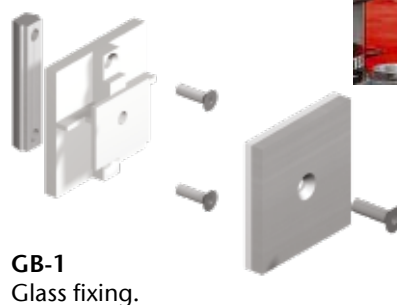
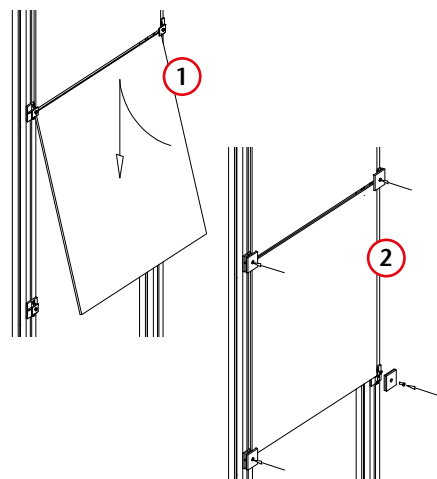
See other accessories for MEGA PROFILE page 20.



# Special fixings with Cobra Expo

## Fittings for glass panels.

Glass panels fitted to Cobra Expo give an impressive and individual design.



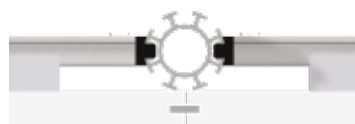
**GB-1-R (right)**  
Glassfitting.

**GB-1-L (left)**  
Glassfitting.

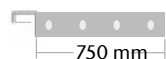


## Cobra Wall

Cobra Wall conceals the frame giving a flat wall to display your graphic.



Detail of Cobra Wall seen from above.



**VS-1**  
1 module



**VS-2**  
1/2 module



**VS-3**  
3/4 module



**VS-4**  
1/4 module



**VS-5**  
Special size module

## Display with a fabric banner

Fabric banners are an economical method of presenting large (and small) scale graphics.

The fabric simply requires a hem top and bottom so as to take the cross rails. The banner will be stretched between the cross rail when fitted to the uprights.

The system can be used as a part of the exhibition stand or as a stand alone display. See more details on page 21.



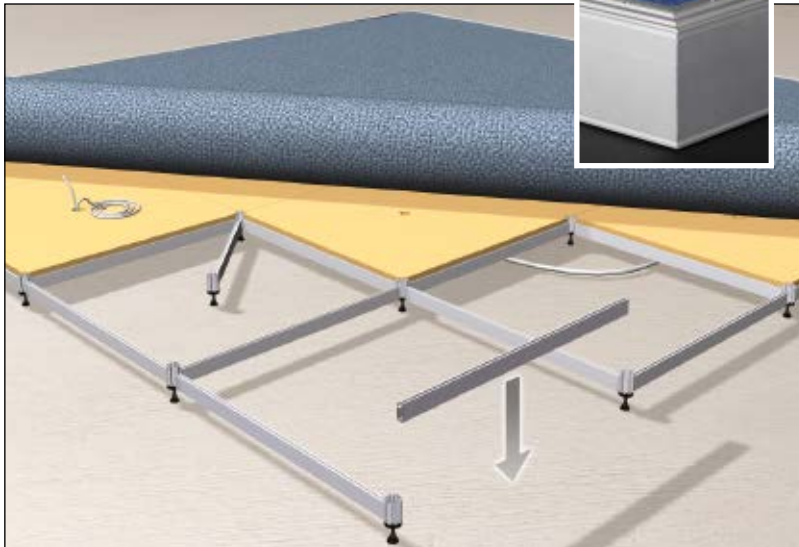


# Cobra Expo

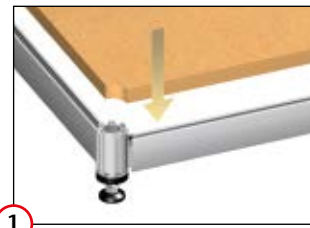
**SYSTEM  
STANDEX®**

## Technical floor

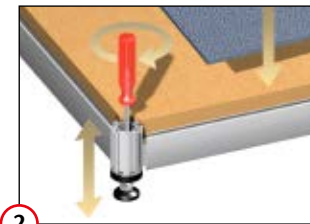
A raised floor can increase the impact of your stand and products. Standex Technical Floor raises the floor 110mm and allows services to be hidden plus you can finish your floor with carpet or laminate as required.



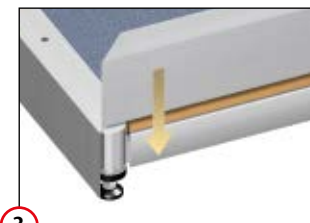
The system is based on, and is part of, the Cobra Expo exhibition stand system. It is easy to assemble – cross rails are fitted with joints that just slide into the uprights - no tools required. Technical floor height allows for cables and services to be hidden. Wheel chair ramps are available as required.



Uprights and cross rails assembled without tools. Panels locate and rest on the frame.



Adjust the up-rights as necessary – lay down the flooring.



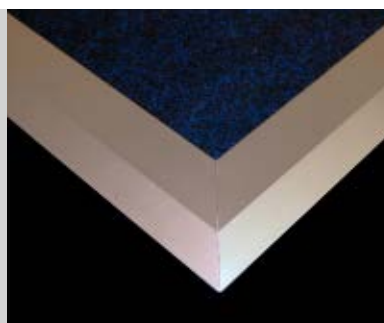
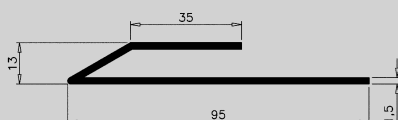
Fix the perimeter profile. This profile covers and protects the edge of the floor and can take graphics.

<b>TG-1</b> Upright with adjustable foot	<b>TG-2</b> 50mm cross rail, ½ module
<b>TG-5</b> 22mm chipboard, 983x983mm	<b>TG-3</b> 50mm cross rail, ½ module diagonal
<b>TG-52-103</b> 100mm perimeter profile, in 5m lengths	<b>TG-4</b> 50mm cross rail, 1 module  <b>1106-12</b> Connector for TG-2, TG-3 og TG-4

100mm perimeter profile in standard modules		
	1 module	2 modules
Straight cut profiles	<b>TG-6</b> L: 985mm	<b>TG-7</b> L: 1969mm
Mitred left end	<b>TG-15</b> L: 1011mm	<b>TG-9</b> L: 1995mm
Mitred right end	<b>TG-14</b> L: 1011mm	<b>TG-8</b> L: 1995mm
Mitred both ends	<b>TG-16</b> L: 1037mm	<b>TG-17</b> L: 2021mm
Cut out for upright/back wall, left	<b>TG-10</b> L: 1007mm	<b>TG-12</b> L: 1991mm
Cut out for upright/back wall, right	<b>TG-11</b> L: 1007mm	<b>TG-13</b> L: 1991mm

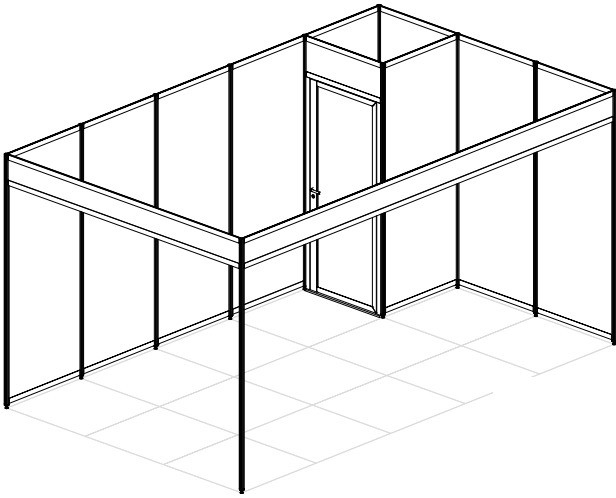
## Floor profile

**GP-1**  
Aluminium profile  
In 5m lengths or cut to length



# Exampels of stands constructions

**Cobra Expo** system is suitable for building small or large stands – only the sky is the limit.  
The system is strong and easy to use.



1

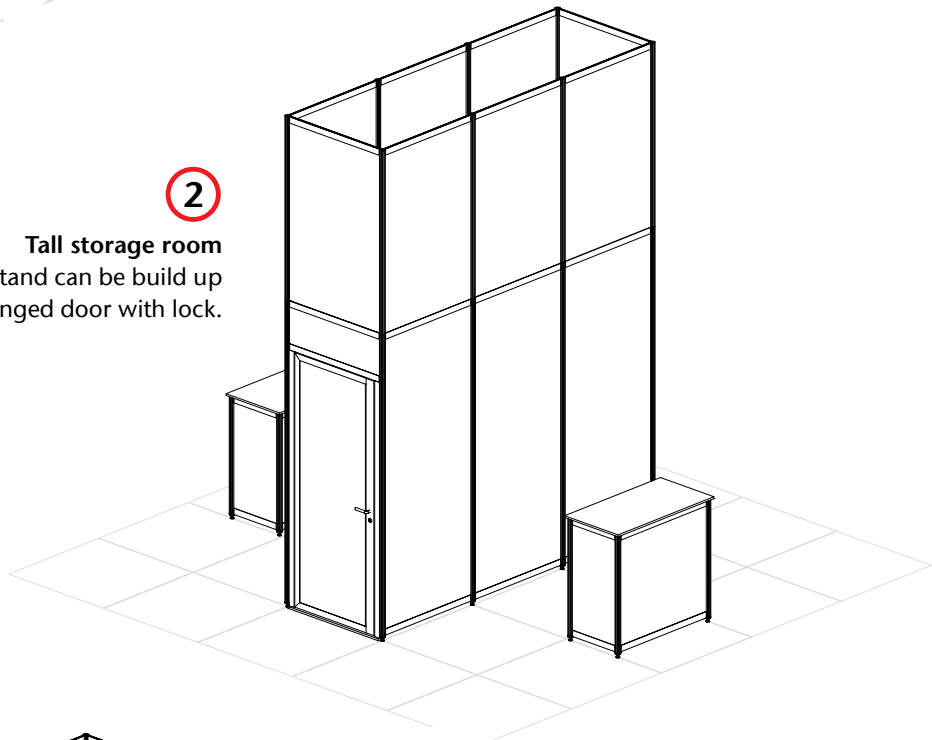
## Corner stand

Corner stand with frieze and small storage room - 2 sides open.

2

## Tall storage room

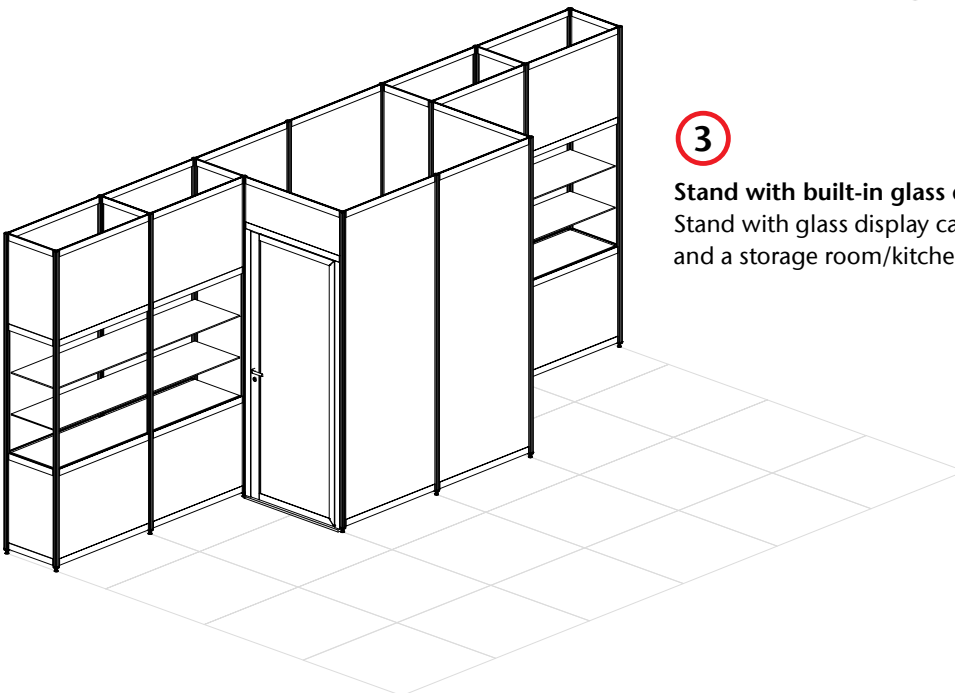
Storage room in a large stand can be build up to 4-5 meters high. Side-hinged door with lock.

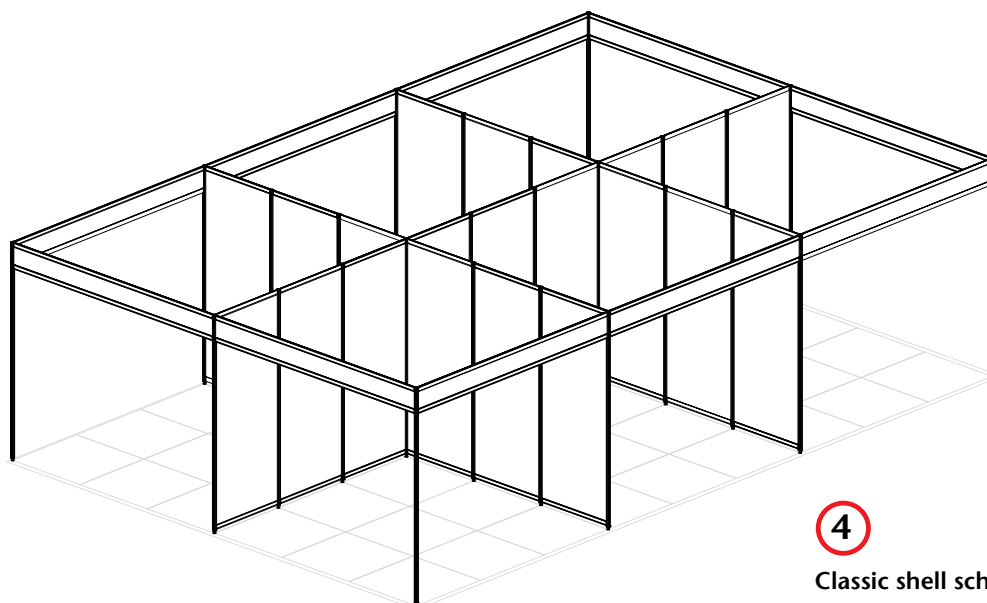


3

## Stand with built-in glass display cases

Stand with glass display cases built-in and a storage room/kitchen.



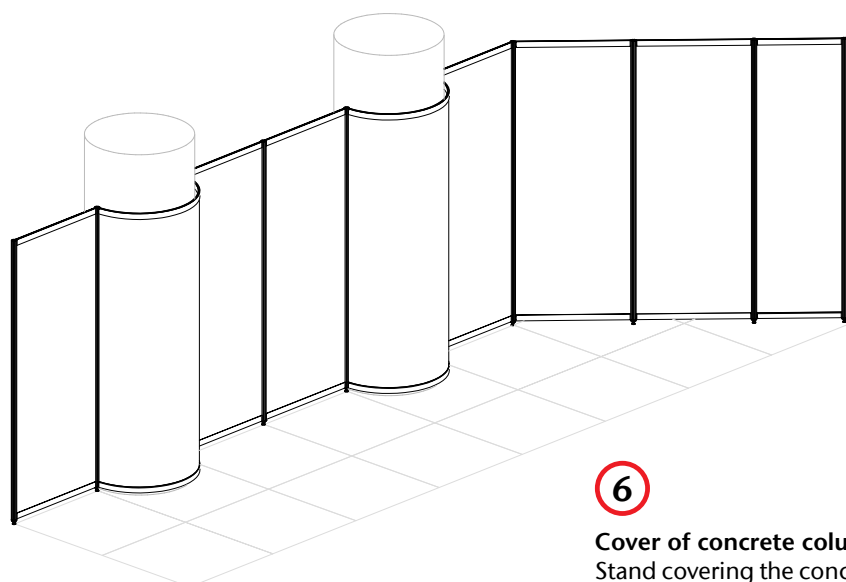
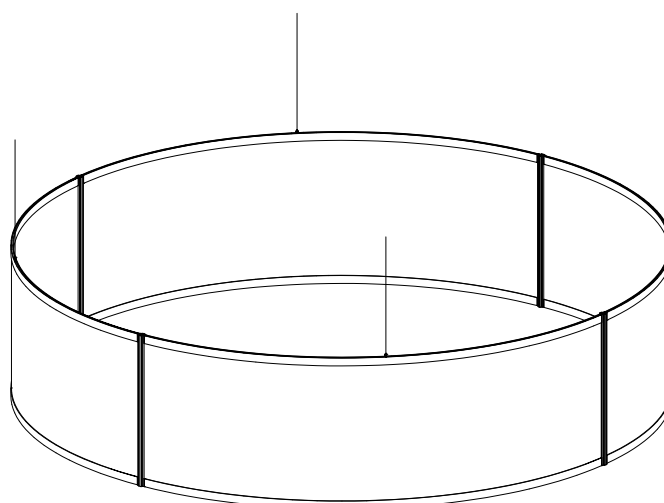


**4**

**Classic shell schemes in an exhibition centre**  
Stands for rent and event.

**5**

**Circular baldachin**  
Circular baldachin/frieze above the stand suspended from the ceiling.



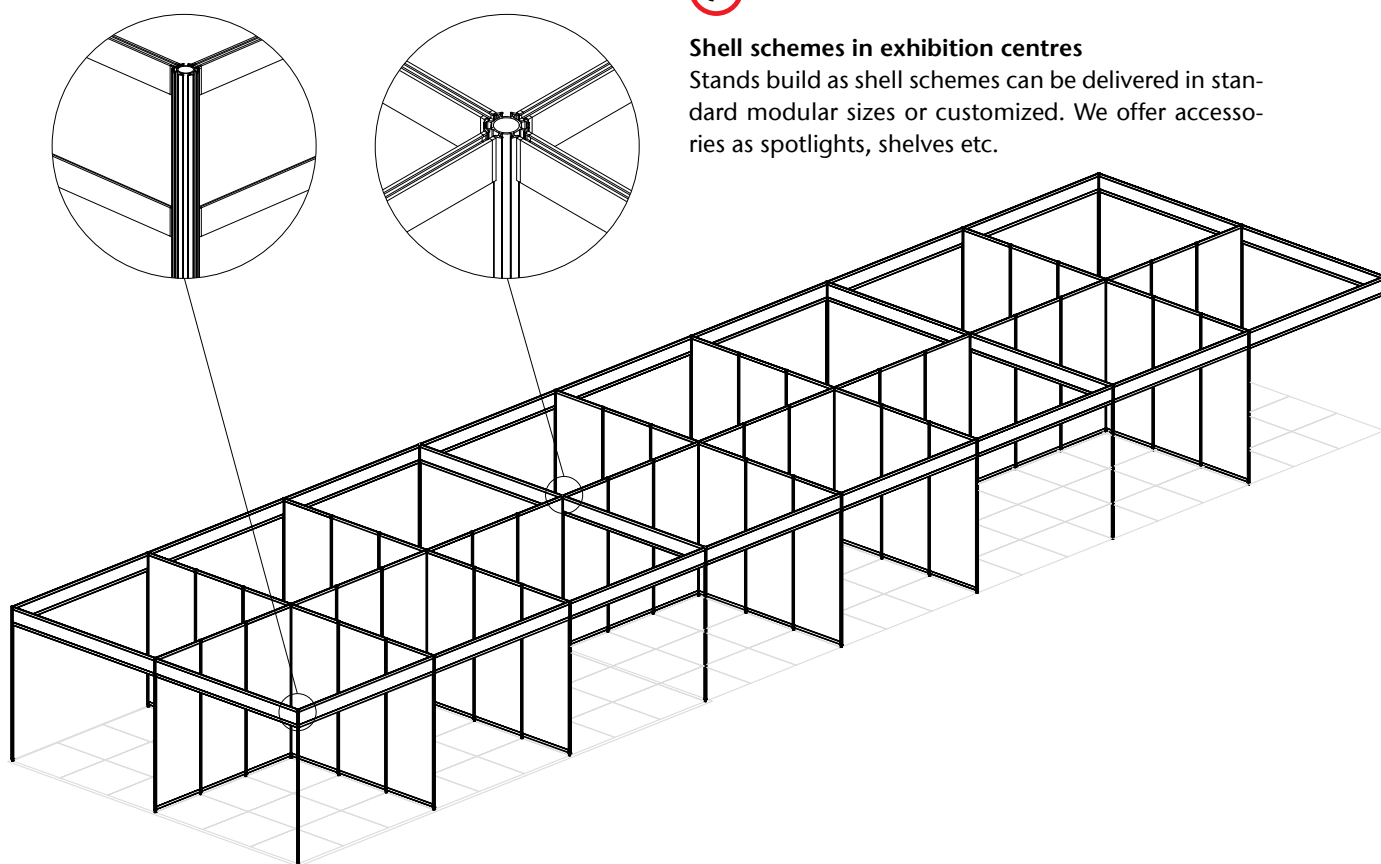
**6**

**Cover of concrete columns**  
Stand covering the concrete columns of the exhibition centre.

7

### Shell schemes in exhibition centres

Stands build as shell schemes can be delivered in standard modular sizes or customized. We offer accessories as spotlights, shelves etc.



## Accessories

### Shelf



**WS-14**  
Shelf, Ø300 mm, 16mm white melamine.

### Spotlights

Spotlights can be attached by clicking into the system.

#### LED



**GDS-HSP-LED 24W**  
Spotlight 24W incl. GDS-bracket

#### Halogen



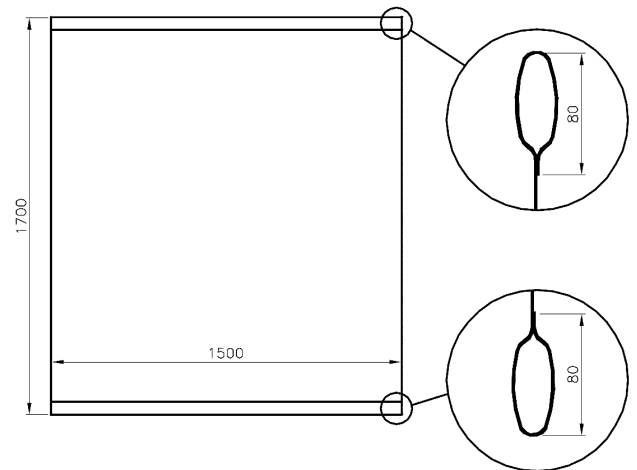
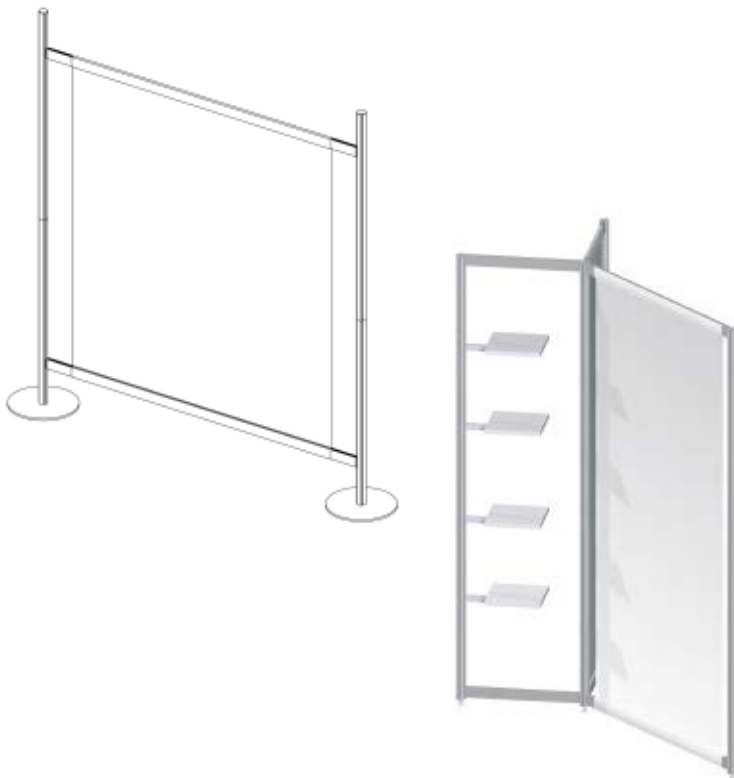
**GDS-HSP-120**  
Spotlight 120W incl. GDS-bracket



# Displays with fabric banner

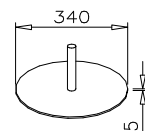


Fabric banner are an economic method of presenting large (and small) scale graphics. The fabric simply requires a hem top and bottom so as to take the cross rails. The banner will stretch between the cross rails when fitted to the uprights. The system can be used as part of the exhibition stand or as a stand alone display. See our range of uprights on page 8 and 14.



Material to have a hem top and bottom to take cross rails.

## Base plate



**WSF-44**  
Base plate Ø340mm

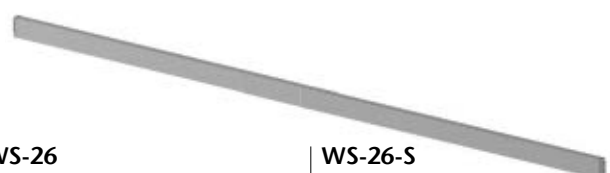
## Completed cross rails

Cross rails complete with connectors – stretch fabric graphics or support between uprights.



**WS-22**  
2 piece cross rail,  
50mm, length 1800mm.

**WS-22-S**  
2 piece cross rail,  
50mm, specify length.



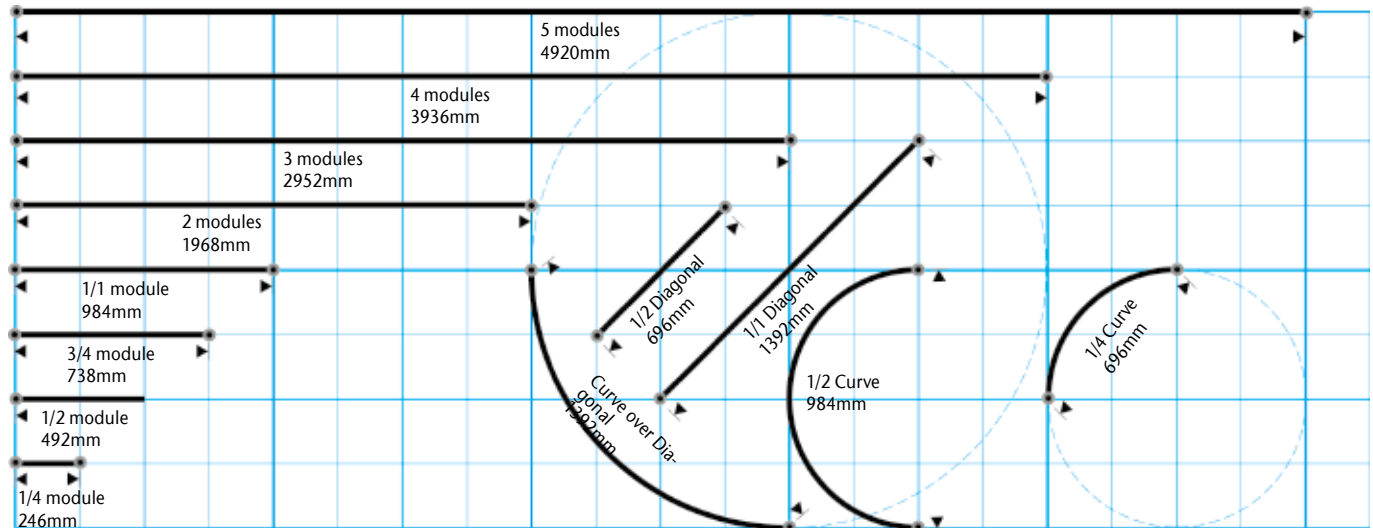
**WS-26**  
50mm cross rail,  
length 1800mm.

**WS-26-S**  
50mm cross rail,  
specify length.

# Cobra Expo

## Module size

The cross rails are to modular lengths of 984mm between the centre of uprights. This ensures that there is room for complete modules in a stand which has been measured in full metres.



## Measurements for cutting panels

In the table you can see the final panel measurements for the most commonly used combinations of cross rails and uprights. Panels should be cut to an accuracy of  $\pm 2\text{mm}$ .

Length of upright incl. adjustable foot			2500mm	2450mm	1000mm	700mm	500mm	Sign friezes 300mm
		Height of cross rails						
Length of cross rails	1/4 module	2 x 50mm 50 + 150mm	214 x 2374 214 x 2274	214 x 2324 214 x 2224	214 x 874	214 x 574	214 x 374	214 x 214
	1/2 module	2 x 50mm 50 + 150mm	460 x 2374 460 x 2274	460 x 2324 460 x 2224	460 x 874	460 x 574	460 x 374	460 x 214
	3/4 module	2 x 50mm 50 + 150mm	706 x 2374 706 x 2274	706 x 2324 706 x 2224	706 x 874	706 x 574	706 x 374	706 x 214
	1/1 module	2 x 50mm 50 + 150mm	952 x 2374 952 x 2274	952 x 2324 952 x 2224	952 x 874	952 x 574	952 x 374	952 x 214
	2 modules	2 x 50mm				1936 x 574	1936 x 374	1936 x 214
	3 modules	2 x 50mm				2920 x 574	2920 x 374	2920 x 214
	4 modules	2 x 50mm				3904 x 574	3904 x 374	3904 x 214
	5 modules	2 x 50mm				4888 x 574	4888 x 374	4888 x 214
	1/2 diagonal	2 x 50mm 50 + 150mm	664 x 2374 664 x 2274	664 x 2324 664 x 2224	664 x 874	664 x 574	664 x 374	664 x 214
	1/1 diagonal	2 x 50mm 50 + 150mm	1360 x 2374 1360 x 2274	1360 x 2324 1360 x 2224	1360 x 874	1360 x 574	1360 x 374	1360 x 214
	Curve over diagonal	2 x 50mm 50 + 150mm	1515 x 2374 1515 x 2274	1515 x 2324 1515 x 2224	1515 x 874	1515 x 574	1515 x 374	1515 x 214
	1/2 curve	2 x 50mm 50 + 150mm	1528 x 2374 1528 x 2274	1528 x 2324 1528 x 2224	1528 x 874	1528 x 574	1528 x 374	1528 x 214
	1/4 curve	2 x 50mm 50 + 150mm	774 x 2374 774 x 2274	774 x 2324 774 x 2224	774 x 874	774 x 574	774 x 374	774 x 214

See the complete program of Cobra Expo with article pages 8-11.

# Other brochures



**EASYLOCK-1**  
Modular system for fabric banners in large sizes



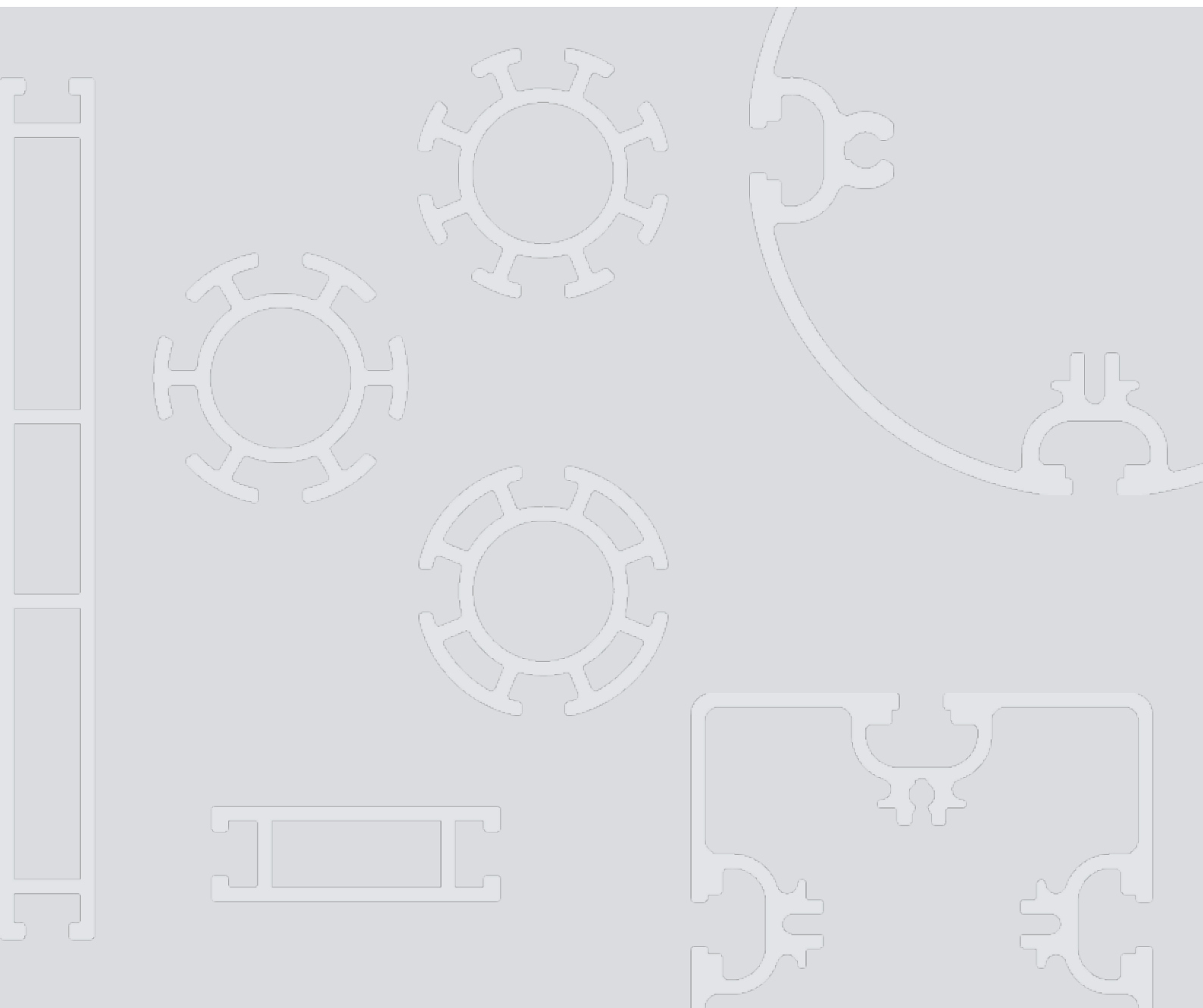
**EASYLOCK-2**  
Modular system for fabric banners in modular sizes



**EASYLOCK-3**  
Modular system for panels with magnets



**Profile system for fabric graphics**  
Frames for fabric graphics – with or without LED illumination



**For more information contact us at:**

SYSTEM STANDEX A/S

Herluf Trolles Vej 140 · 5220 Odense SØ · Denmark

Tel.: +45 66 15 66 15 · Fax: +45 66 15 55 48

info@system-standex.dk · [www.system-standex.com](http://www.system-standex.com)



**SYSTEM  
STANDEX®**