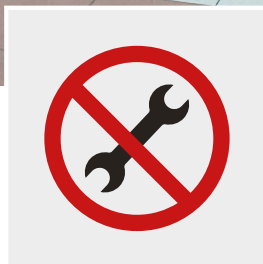


# EASYLOCK-4

Exhibition system build without use of tools

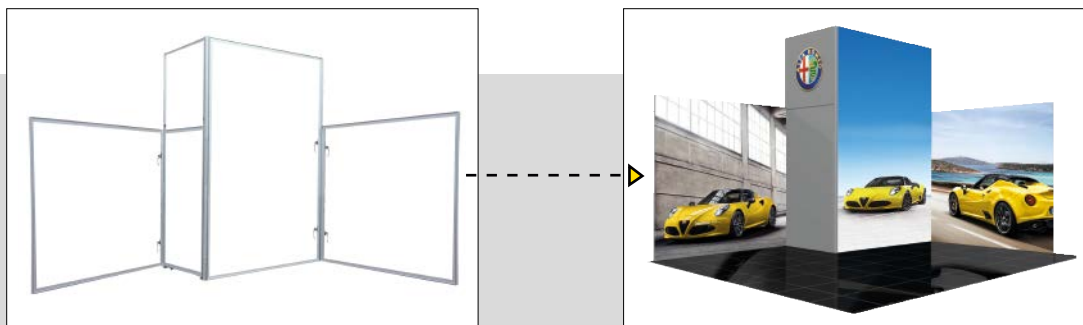


Assembly/dismantle with handles – no tools required

**SYSTEM  
STANDEX®**

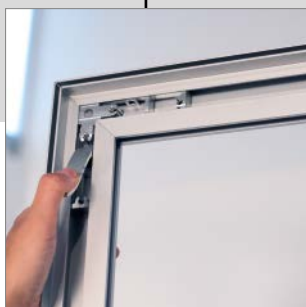
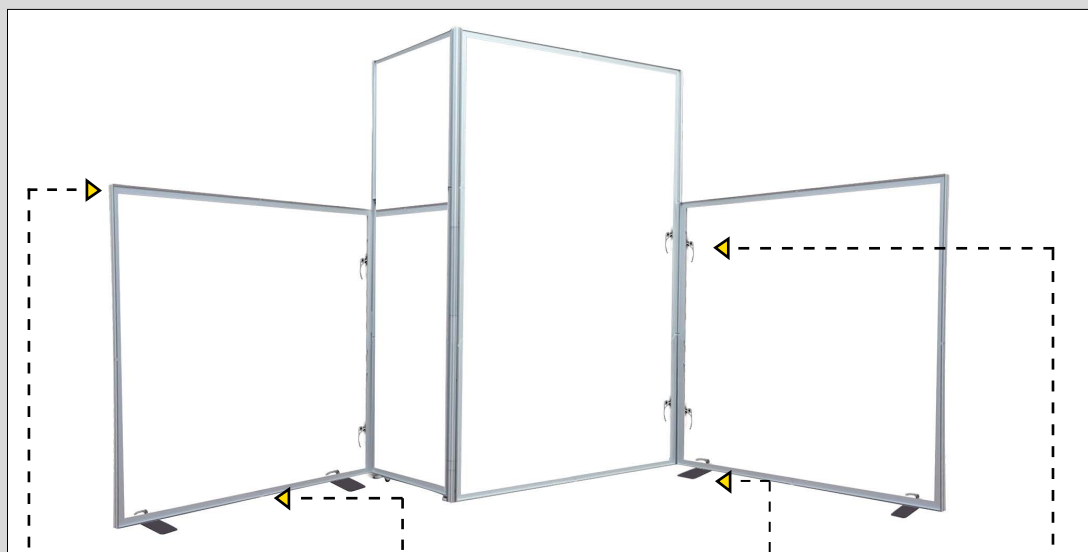
# EASYLOCK-4

Exhibition system build without use of tools



Example with exhibition stand build in EASYLOCK-4.

The system is quick and easy to setup without use of tools. You can build it in different designs/sizes and reuse the material again and again.



## Corner

(I44-2A-SF)

Assembly/dismantle with handles. No tools required.



## Extension

(1105-15-SF)

Profiles, split for transport, can be assembled with handles. No tools required.



## Base plates

(WSF-HANDLE)

Mounted onto frames with handles (SF-HANDLE). Assembly /dismantle with handles. No tools required.



## Assembly of frame

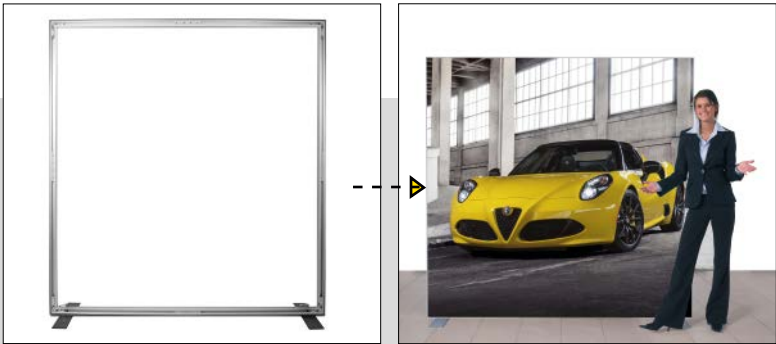
(SF-HANDLE)

For the assembly/dismantle of frame to frame & frame to upright SF Handles are used. No tools required



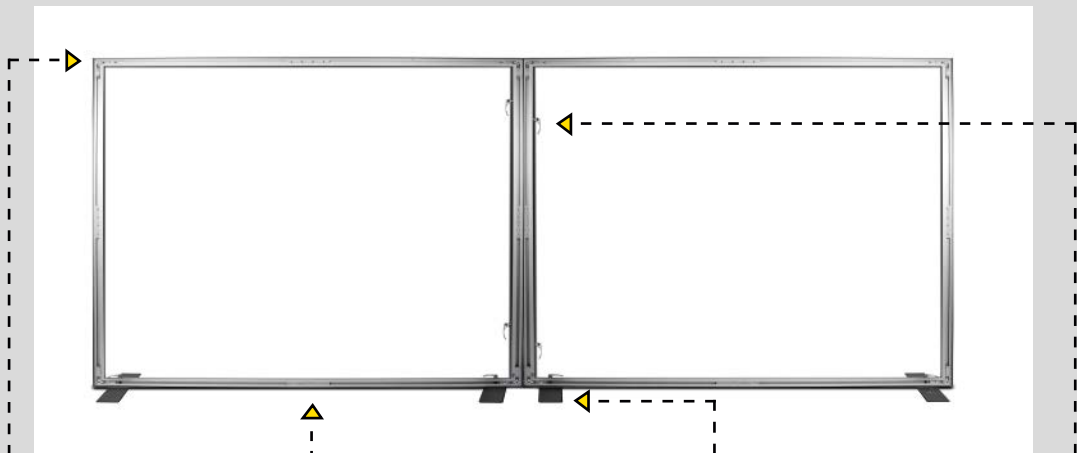
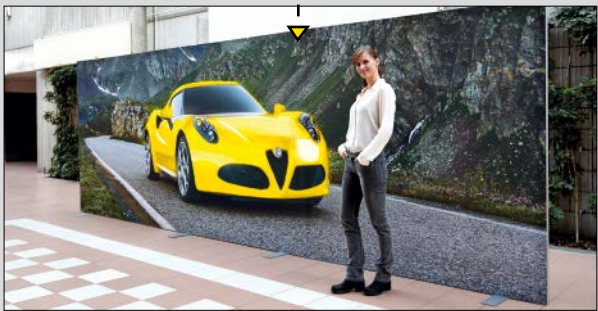
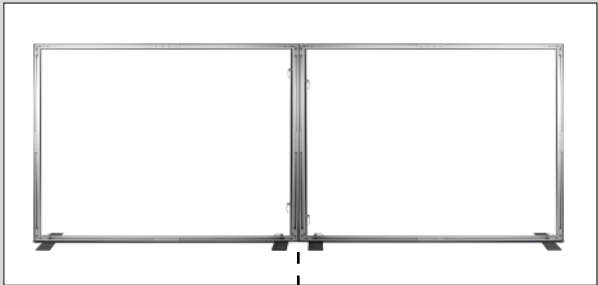
# EASYLOCK-4

Free standing displays build without the use of tools



Examples of freestanding display frames with EASYLOCK-4.

The system is quick and easy to setup without use of tools. You can build it in different designs/sizes and reuse the material again and again.



**Corner**  
(I44-2A-SF)  
Assembly/dismantle with handles. No tools required.



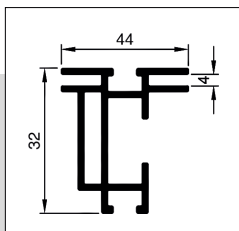
**Extension**  
(1105-15-SF)  
Profiles, split for transport, can be assembled with handles. No tools required.



**Base plates**  
(WSF-HANDLE)  
Mounted onto frames with handles (SF-HANDLE). Assembly /dismantle with handles. No tools required.

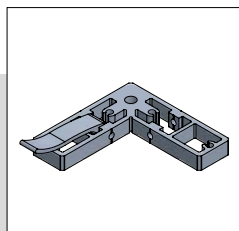


**Assembly of frame**  
(SF-HANDLE)  
For the assembly/dismantle of frame to frame & frame to upright SF Handles are used. No tools required.



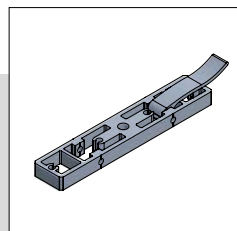
### SF-44-2A

Alu profile for double sided fabric graphics



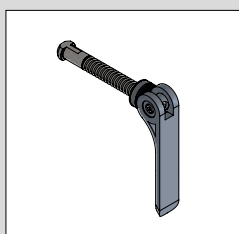
### I44-2A-SF

Corner connector  
Right  
Left



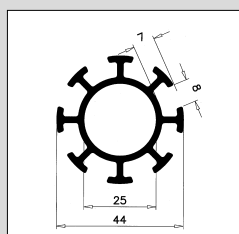
### 1105-15-SF

Extension profile



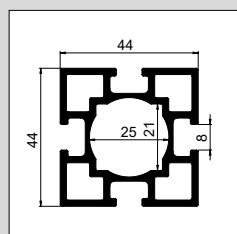
### SF-HANDLE

SF handle



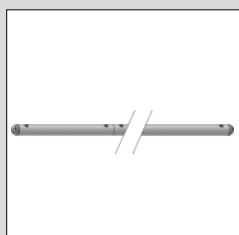
### RC44-8

Upright



### RC44-44-4

Upright



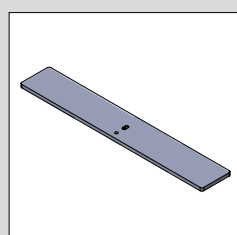
### WS-27-2A-S

Alu profile for strengthening of frame.



### GDS-HSP-LED 24W

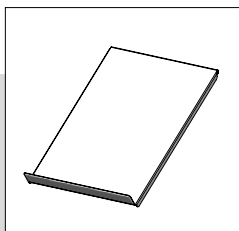
LED spotlight



### WSF-HANDLE

Base plate

## Accessories



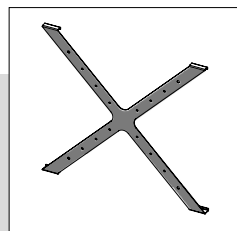
### ML-A4

A4 leaflet holder



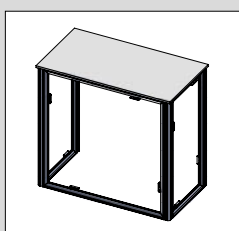
### 1221

Shelf carrier



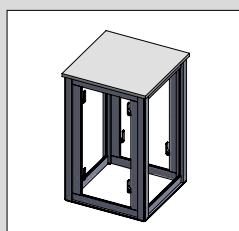
### 1230-TV-BRACKET

Vesa compatible



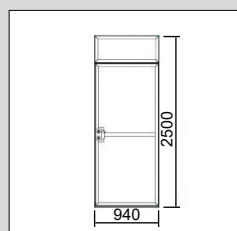
### PC-EASYLOCK

Counter



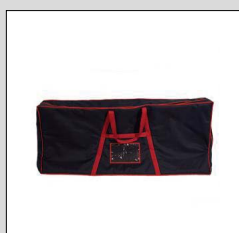
### PD-EASYLOCK

Podium



### SF-44-DOOR

Door for fabric  
graphics



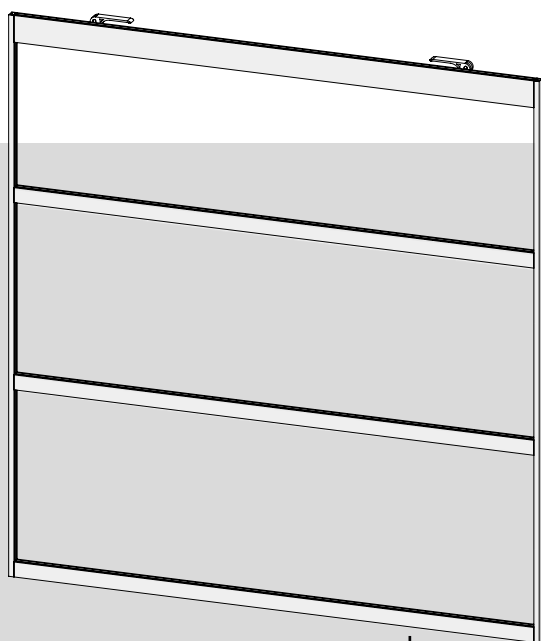
### 281-EASYLOCK-4

Transport bag



### Transport cases





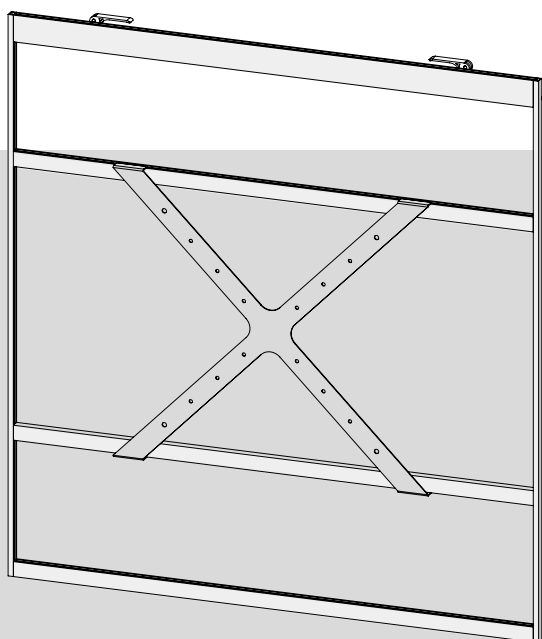
**1232-MULTI-BRACKET**



Bracket attached to  
EASYLOCK-4 frame

# EASYLOCK-4

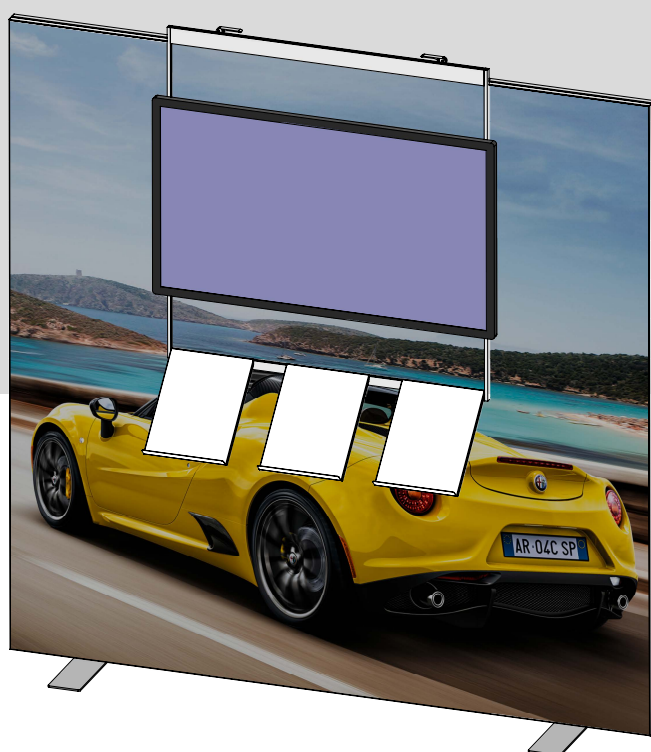
## Examples



With 1230-TV-BRACKET attached

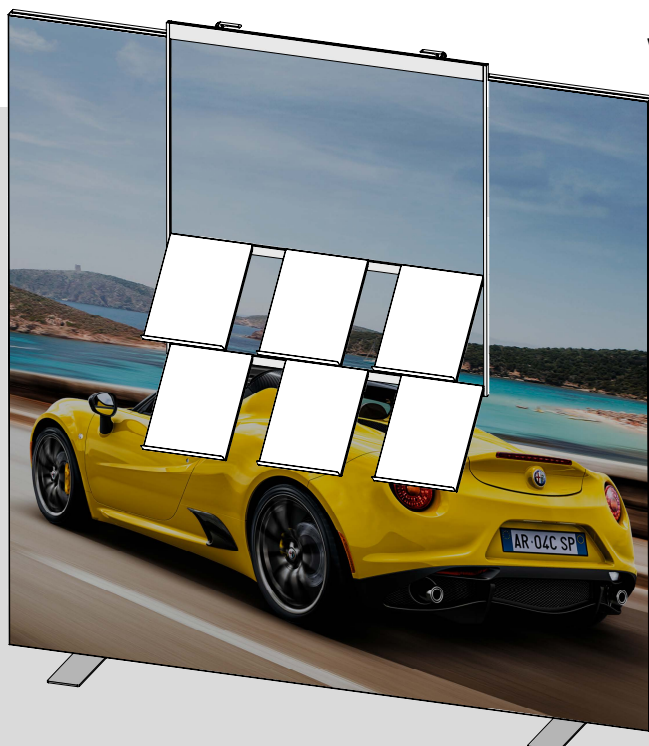


With TV



With TV and 3 x ML-A4 leaflet holders attached

## Examples



With 6 x ML-A4 leaflet holders attached



With 3 x ML-A4 leaflet holders attached

## System Standex A/S

David Lynes

Bank Gallery High Street

Kenilworth CV8 1LY

Phone (0) 1926 858 137

Mobile: (0) 7714 673 658

info@system-standex.co.uk

Website: system-standex.co.uk

**SYSTEM  
STANDEX®**